

# **SMART Accessories!**

***Metro now offers an  
integrated flashing  
system for the  
common vent pipe.***

Use a Metro SMARTjack on your standard pipe penetrations and ensure a long-life weathertight finish, add to this detail a Metro SMARTsleeve that fully encapsulates the pipe, for a look that blends perfectly with the surrounding roof and you can really make your installations shine.

The SMART-Jack comes in two sizes and the SMART-Sleeve comes in one to fit most standard pipes. Each piece is coated with Metro's durable Non-Oiled stone-coat finish, including the rubber seal collar for long-life protection from the elements.



*Smart Roofs for Smart People®*

SMART-Sleeve shown may differ slightly from actual Metro SMART-Sleeve.



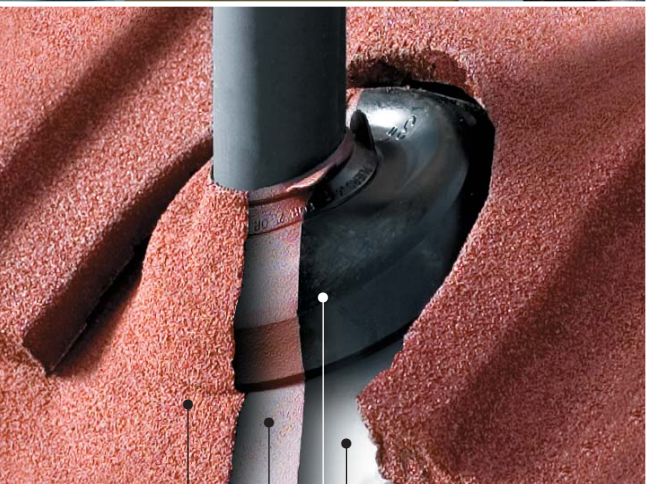


**SMART-Jack:**

3-in-1 - Fits Pipes from 1-1/4" to 3" diameter  
 3-in-4 - Fits Pipes from 3" to 4" diameter

**SMART-Sleeve:**

Universal size to fit pipes 3/4" to 4" in diameter.



- .25 mil Aluminum Base
- Rubber Seal
- Metro BASECOAT Acrylic Primer
- Metro Stone Coating

**COLORS**

Metro SMART-Jacks and SMART-Sleeves are available in all standard Metro colors. Check with your local distributor for availability on Premium, Special or Custom colors.



*Smart Roofs for Smart People*

3093 Industry Street  
 Oceanside, CA 92054  
**Tel: (866) METRO-4U (638-7648)**  
 Fax: (760) 435-1162  
 www.smartroofs.com

**SMARTjack and SMARTsleeve**

The simplistic design of Metro's SMARTjack allows for easy contractor installation and reduced distributor inventory. Metro's SMARTjack has the ability to fit multiple roof pipes using removable tabs, eliminating the need to keep large inventories. The SMARTjack is constructed with an aluminum base and a pre-molded cone with a tear away rubber self-sealing gasket. The rubber gasket enables the SMARTjack to fit pipes ranging in diameter from 1-1/4" to 3" and 3" to 4" with the larger model, virtually covering all your pipe flashing needs.

Metro's Stone-Coated SMARTsleeve vent pipe cover provides a professional trimmed look for most roof pipes. It allows for easy contractor installation on the most common pipe sizes simply by sliding the Metro SMART sleeve over the existing pipe after having already flashed it using a Metro SMARTjack. A single screw through the back of the sleeve into the pipe, approximately six inches above the Metro roof surface, secures the SMARTsleeve in place. Metro's SMART-Sleeves are constructed with the same Galvalume® steel as our panels. And come with an integrated guard on the top to prevent rodents or debris from entering the pipe. They are easily trimmed to fit any of Metro's profiles.

**Testing Credentials**

ICC Evaluation Reports ESR-3098 & ESR-5218  
 UL 'Listed' R19204  
 UL-Class-4 Impact rated (Hail)  
 FLORIDA # FL-698-R1 (Non-HVHZ)  
 FLORIDA # FL-67109-R1 (HVHZ)  
 FLORIDA - Miami-Dade NOA-# 08-0618.02  
 CANADA - Evaluation Report CCMC 13313-R



**PATENTS:**

METROSHINGLE® Patent No.: US 6,269,303  
 METRO TILE® Patent No.: US D527,835 S  
 METROROMAN® Patent No.: US D526,727 S

\*Galvalume® is a registered trademark of BIEC International Inc.  
 © 2011 Metro Roof Products  
 020111-25M MR-8-SJK

SMART-Sleeve shown may differ from actual Metro SMARTsleeve.

**NOTE:** The Metro SMART-Sleeve is not designed to function as a pipe jack flashing. All roof pipes shall receive a code-approved flashing (SMART-Jack) before installation of the SMART-Sleeve.

